

CLIENTE: OMP viale del lavoro 98 CAP 36048 BARBARANO MOSSANO (VI).

MACCHINA: WY-250 SUPER MILL S.N:N250201

1 / 4

DATA: 26/05/2026

TECNICO IMU: SOLDA'

GEAR BOX TORRETTA UPPER (1)

GEAR BOX PIENO DI GRASSO NBU15 PERCHE? IL SISTEMA E' LUBRIFICATO ARIA OLIO

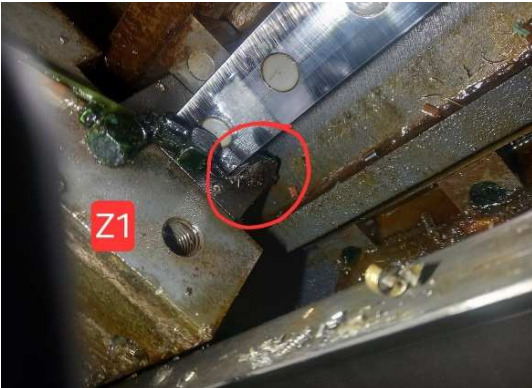


GEAR BOX TORRETTA LOWER (2)

PRESENZA DI RUGGINE ALL'INTERNO (PROBLEMI AL SISTEMA DI LUBRIFICAZIONE ARIA OLIO).



GUIDE PATTINI ASSE Z1 DA SOSTITUIRE

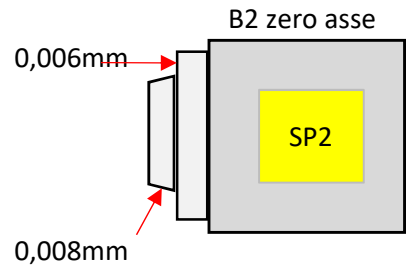
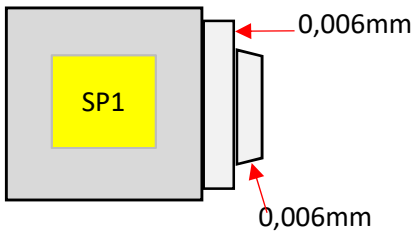


GUIDE PATTINI ASSE Z2 DA SOSTITUIRE

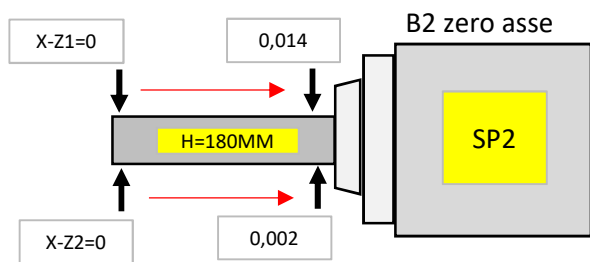
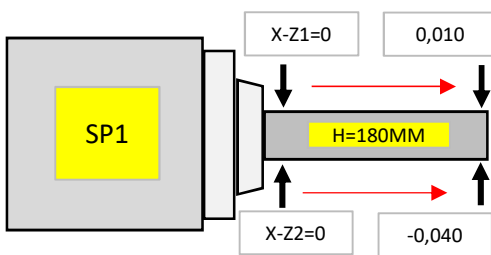


GEOMETRIA MACCHINA:

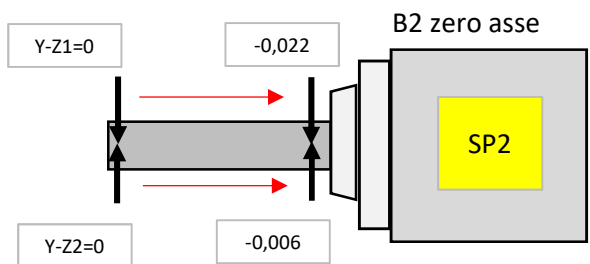
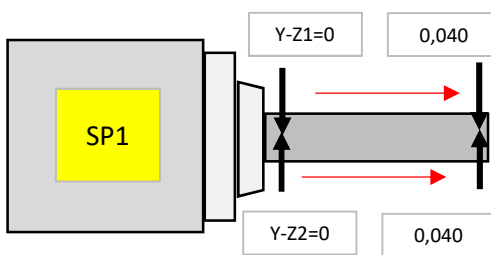
RUN OUT ASA 6 E ASA 5 mandrino 1 e mandrino 2:



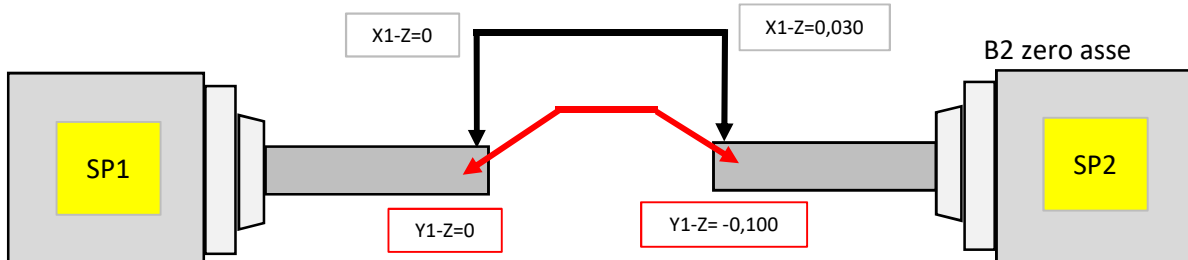
VERIFICA X-Z

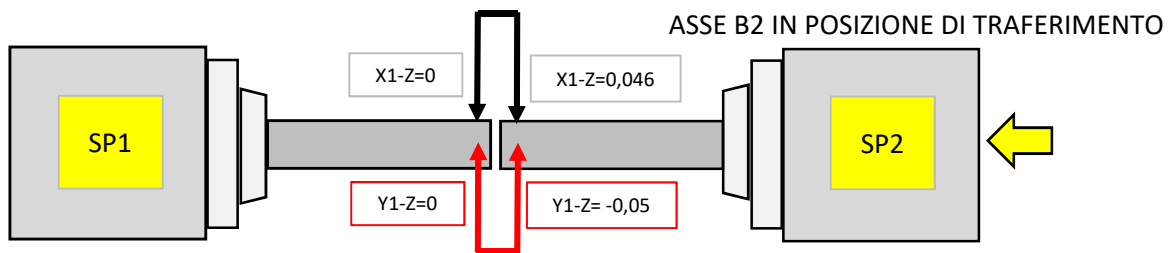


VERIFICA Y-Z



VERIFICA PARALLELISMO SP1-SP2 CON Z1 IN DIREZIONE (X) E (Y)





N.B:

- 1) RUN OUT DISCO FRENO POSTERIORE SP1: 0,04mm
- 2) RUN OUT CILINDRO IDRAULICO APRI CHIUDI PINZA SP1: 0,1mm
- 3) RUN OUT DISCO FRENO POSTERIORE SP2: 0,1mm
- 4) RUN OUT CILINDRO IDRAULICO APRI CHIUDI PINZA SP2: 0,03mm

